

R ME

High security cylinder



PRODUCT

The R ME patented multi-profile locking system combines the highest safety standards with functionality and design features. The R ME is available in key different, key alike versions and suitable for Masterkey-systems.

APPLICATION

The patented R ME cylinder is available in both compact and modular version and therefore it represents an ideal solution also for armoured doors. Thanks to the possibility of combination on three-lines encryption the R ME Multiprofile cylinder guarantees a very high permutation calculation and is suitable for multi-level master key systems.

VERSION

Available in compact and modular design as:

- single profile cylinder
- double profile cylinder
- pre-arranged for knob
- knob cylinder

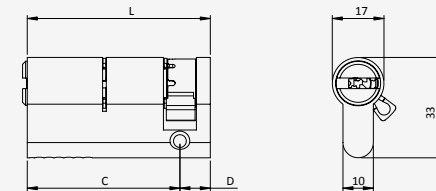
Available in compact design as:

- scandinavian type
- rim cylinder
- round cylinder

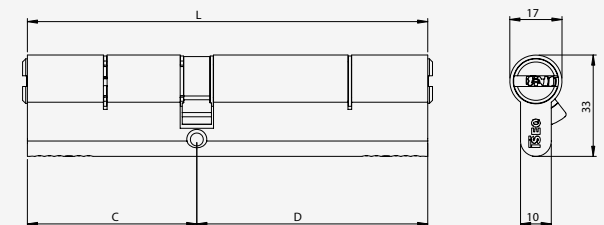
TECHNICAL PRODUCT FEATURES

- Cylinder body and plug made of brass in the standard version matt nickel-plated
- Suitable for installation in fire doors
- Encryption pins in stainless steel
- Counterpins in brass
- Springs in stainless steel
- Euro-profile cylinder (norm)
- Locking cam made of sintered steel
- Locking cam in min. 30° position (according to DIN)
- In each plug are 2 picking-resistant counterpins
- The drilling protection consists of hardened steel pin in the cylinder body and plug
- Patented mobile element in key-profile, interacting with special pins in the plug

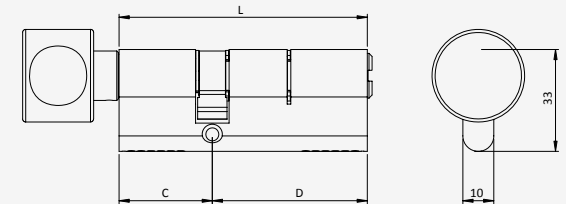
SINGLE PROFILE CYLINDER



EUROPEAN DOUBLE PROFILE CYLINDER



EUROPEAN DOUBLE PROFILE CYLINDER. ROUND KNOB



R ME

High security cylinder

FEATURES

R ME has 6 encryption pins in the inferior line, up to 4 pins in the lateral line and up to 5 pins in the superior line from a length of 30-30 made of wear-resistant special brass, per locking side.

A drilling protection as well as anti-pick protection is integrated in the profile cylinder.

The surface of the cylinder body is matt nickel-plated or brass as standard.

The keys are made of nickel silver. The key is available with a co-printed head in black/red (20 mm key neck) or with key-caps in 5 different colours (18 mm key neck).

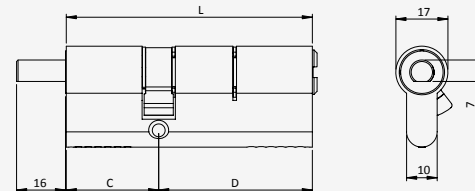
Optionally selectable features:

- emergency and danger function
- free cam
- construction key

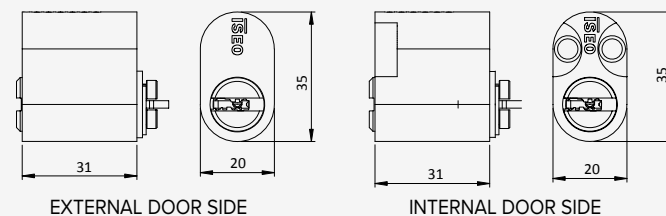
STANDARDS

Compact and modular version:
SKG ***

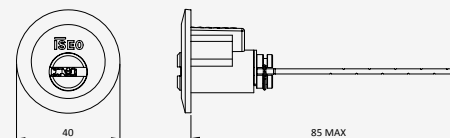
EUROPEAN DOUBLE PROFILE CYLINDER. PREARRANGED FOR KNOB



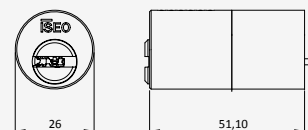
OVAL SCANDINAVIAN CYLINDER



EXTERNAL RIM CYLINDER



FIXED EXTERNAL CYLINDER



INTERNAL CYLINDER

