

# Digital Door Viewer

## TS710



**Generous display**

**For house entrance and apartment doors**

**Wide-angle lens**



**ASSEMBLY/OPERATING INSTRUCTIONS**



facebook.com/BASI GmbH



@basi\_gmbh



www.basi.eu

## General notes

### Intended use

Read the usage and maintenance instructions carefully before mounting the spyhole. Keep the manual with you for future use. If the product is passed on to any third party, include the manual with it.

**Warnings:** There should be no dangers whatsoever expected in the professional assembly and operation compliant with the instructions. Small parts and packaging materials can be swallowed by children and lead to choking! Make sure that small parts and packaging materials do not get into the hands of children. Dispose of the packaging material immediately.

Please read these operating instructions before using the device. The camera or main body **MUST NOT** be dismantled. Please handle the device carefully. In order to prepare for the assembly, please loosen the two screws on the lower side of the viewer, take out the retaining plate and remove the protective film.

The manufacturer expressly reserves the right to make technical changes.

### Disclaimer

The manufacturer accepts no liability for damage or injury resulting from incorrect handling.



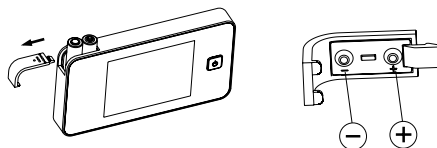
### Disposal

Help to protect the environment and dispose of the product and the packaging materials in accordance with the local regulations. Do not dispose of the device in household waste! Electronic devices must be disposed of in accord-

ance with the directive on waste electrical and electronic equipment via the local collection points for waste electronic equipment!

### BEFORE THE ASSEMBLY:

Please put in the battery first before you install the door viewer.



1. Slide the cover left to open.
2. Install the batteries in accordance with the +/- sign.
3. Close the cover.

### Assembly:

#### Step 1:

Remove the retaining plate of the digital door viewer by loosening the lower fastening screw (2).

#### Step 2:

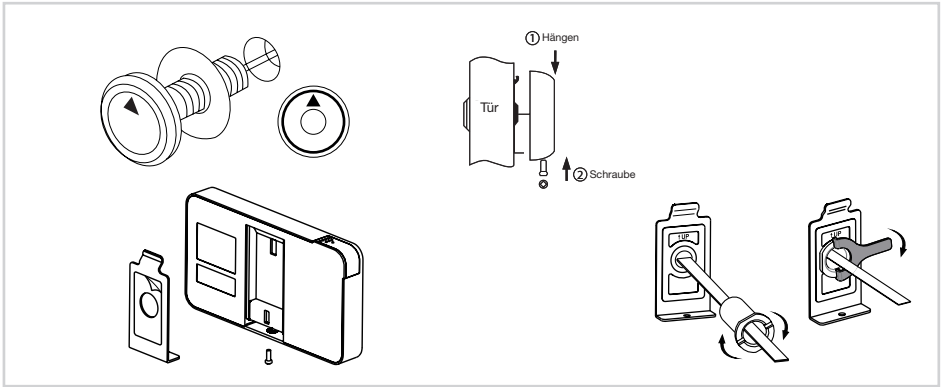
Remove existing viewer or drill a 14 mm wide hole in the door at eye level. Put in the camera form outside and simultaneously place the washers between back of the lens and the door. Make sure that the arrow at the front of the camera points upwards.

#### Step 3:

Now route the camera's connection cable with the plug on the inside of the door through the retaining plate. Place the retaining plate over the end of the camera lens and then screw the fastening cylinder on the camera threads; this will fasten the plate on the door.

#### Step 4:

The camera's connecting wire should now be properly connected at the



bushing at the back of the door viewer; excess wire should be fastened behind the small hook.

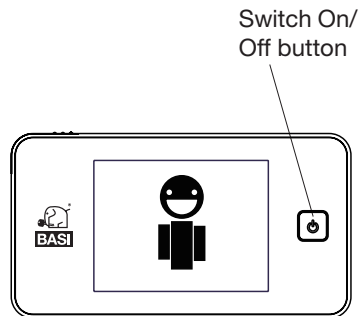
#### Step 5:

Hook the digital door viewer in the clamp above on the retaining plate (arrow upwards) and fasten the viewer by inserting the two small screws through the opening below on the housing of the viewer and tighten the screws.

#### Operation:

1. Switch on/off button: Press and release the button; the device is then activated for 10 seconds.

2. Display lamp: If the display lamp lights up, please replace the batteries.



#### Technical specifications

For house and apartment front doors  
 Suitable for doors with a door thickness of 38 - 110 mm  
 Installation diameter: 14 - 22 mm

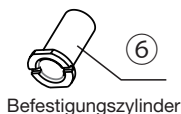
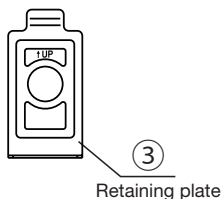
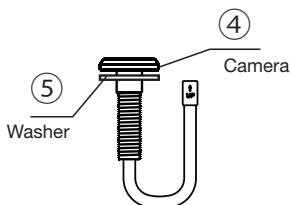
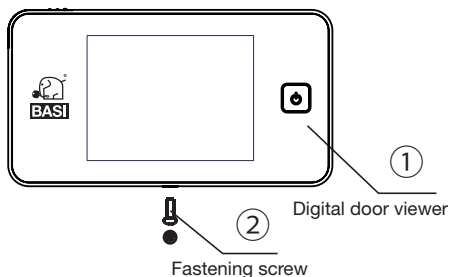
<b>Screen</b>	3.5" thin-film transistor	<b>Sensor</b>	0.3 megapixel CMOS
<b>Batteries</b>	2 AAA batteries	<b>Wide-angle lens</b>	105°
<b>Product size</b>	125 mm (width) x 68 mm (height) x 15 mm (depth)		

## Scope of delivery:

- 1) Digital door viewer
- 2) Fastening screw
- 3) Retaining plate
- 4) Camera
- 5) Washer
- 6) Fastening cylinder
- 7) Fastening tool

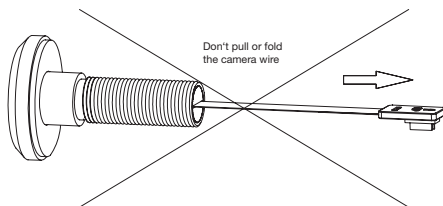
## Not in the scope of delivery:

2 AAA batteries



## WARNING!

Make sure you assemble the door bell camera carefully. **Do not pull or fold the camera wire.** If the camera wire is pulled or folded, this could damage the product.



When fitting the door viewer camera, first unscrew the camera cylinder and insert the door viewer camera into the peephole with the arrow points up. After the camera is well positioned, screw up the locking cylinder from inside door. **Do not rotate the camera from outside door, this could damage the camera. Also do not rotate camera when disassembling this product.**

© Copyright

Reprint or copy (even in excerpts) may be made only with the permission of:  
BASI GmbH  
Konstantinstrasse 387  
41238 Mönchengladbach  
Germany

2023

This publication, including all its parts, is protected by copyright.

Any use outside the strict limits of copyright without the consent of BASI GmbH is not permitted and punishable.

This applies in particular to duplications, translations, microfilming and the feeding and processing in electronic systems.