

Preparing Your Bottle to Filter.

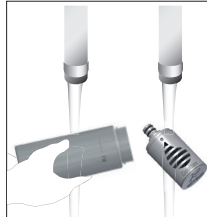
What to do now?

1. Prime your filter cartridge.

- Remove the filter cartridge from the bottle and bag.



- Rinse the bottle and cartridge with clean water.

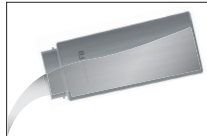


- Place the cartridge in the bottle (or a clean bowl) and immerse in cold clean tap water for 15 minutes to allow the filter in the cartridge to become fully wetted.

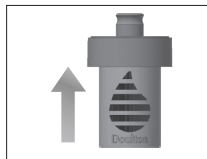


This is important - the filter flows best when wet.

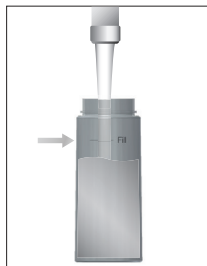
- Throw the water away, remove the cartridge and rinse with clean water.



- Firmly push the cartridge into the mouth piece, ensuring that it is fully located.



- Fill the bottle as shown up to 2.5cm from the top, and replace the mouthpiece with the primed filter.



- **All done!** You can now enjoy great tasting Doulton® water from any tap!

2. Using Your Bottle.

- The bottle is designed for drinking water 4°C to 40°C only.
- The bottle is not suitable for children under the age of 3 years.
- Please note; whilst the filter offers some bacteria protection, it is only intended to filter treated municipal mains drinking water.
- A sucking action is required to draw water through the filter in normal use.
- The cartridge has a lifetime of 300 Litres (545 fills/ 4 months).
- When fitting a new cartridge, follow the priming instructions in section 1.
- If the cartridge is allowed to dry out, we advise that you repeat the priming process to thoroughly wet the cartridge and optimise the flow.

3. Cleaning Your Bottle.

- Remove and rinse cartridge with clean cold water (no detergent).
- Hand wash the bottle, mouthpiece and lid in warm water and a mild detergent, rinse with clean water and dry, taking care not to dislodge the air valve in the mouthpiece.

NB: The filter bottle is not designed to be washed in a dishwasher.

4. Disposal

- Dispose of your used cartridge with your general household waste.
 - If you wish to dispose of your bottle, please check local recycling advice. The clear bottle is Tritan™ (PETG), the mouthpiece and lid are polypropylene (PP).
- Don't forget that your bottle is completely re-useable – you just need to fit a new cartridge!**

Additional Notes

- Always store spare cartridges, sealed in their packaging in a cool dark place.
- To ensure that your drinking water is always fresh, discard and replace water that has been contained in the bottle for longer than 24 hours.
- The cartridge contains carbon, so some black particles may be seen in the packaging and bottle, these should disappear after priming .
- Doulton® Water Filters cannot accept liability if the user instructions are not followed.
- For more information, after sales advice and to purchase replacement cartridges, visit www.doulton.com

